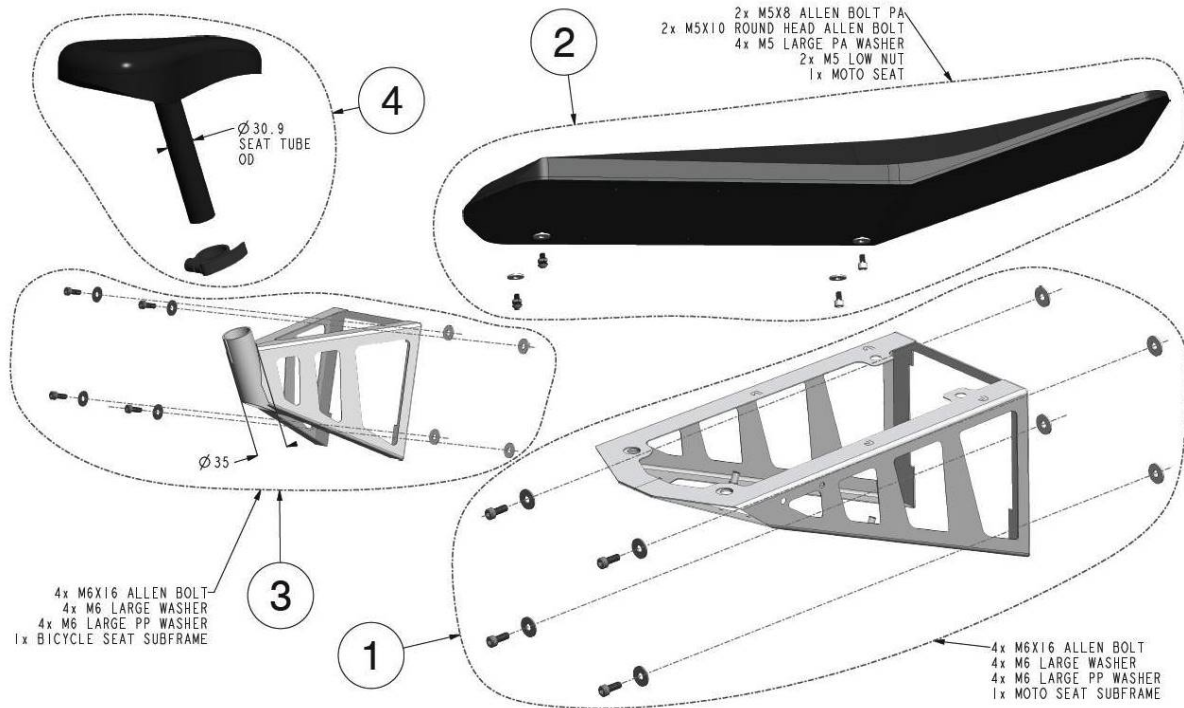
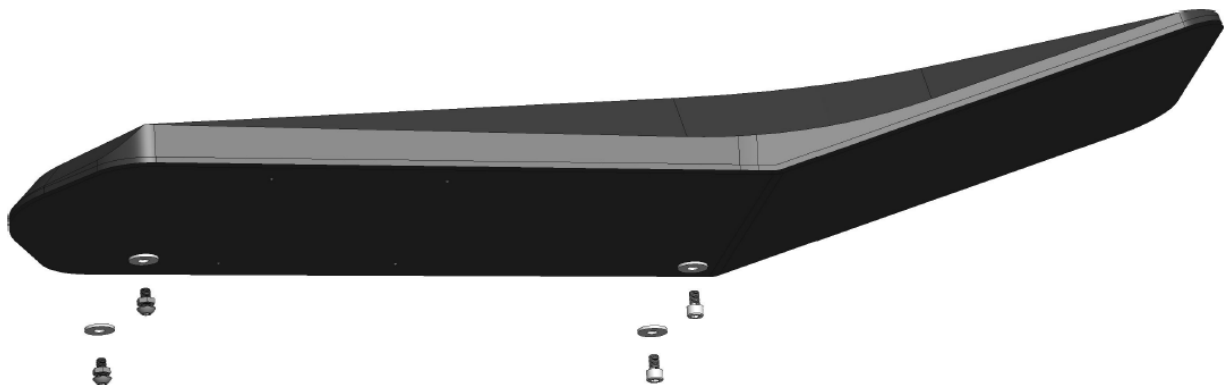


CAT.C16: SEATS Q155/Q140MD 2025



(2):



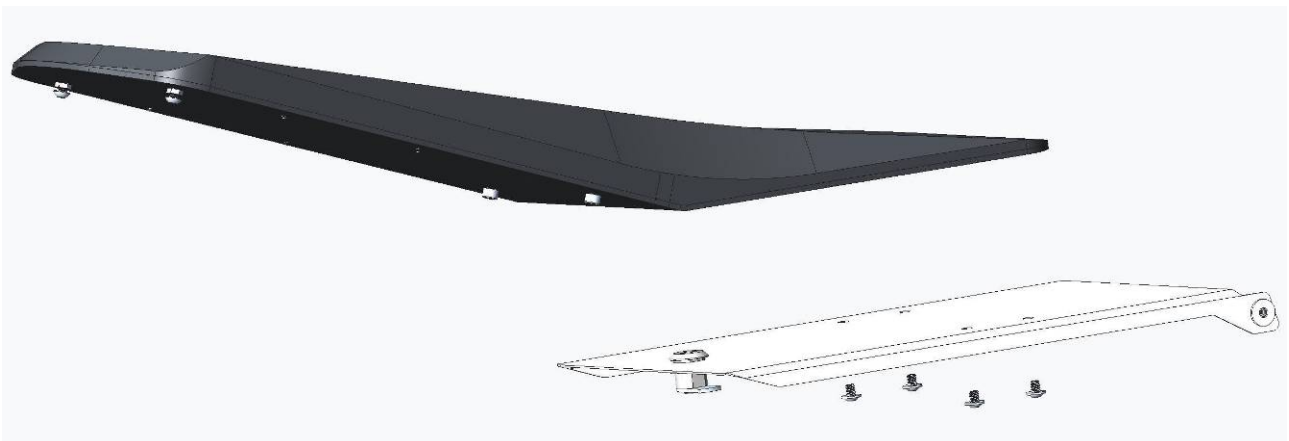


Install M5x8 Allen PA bolts (plastic)

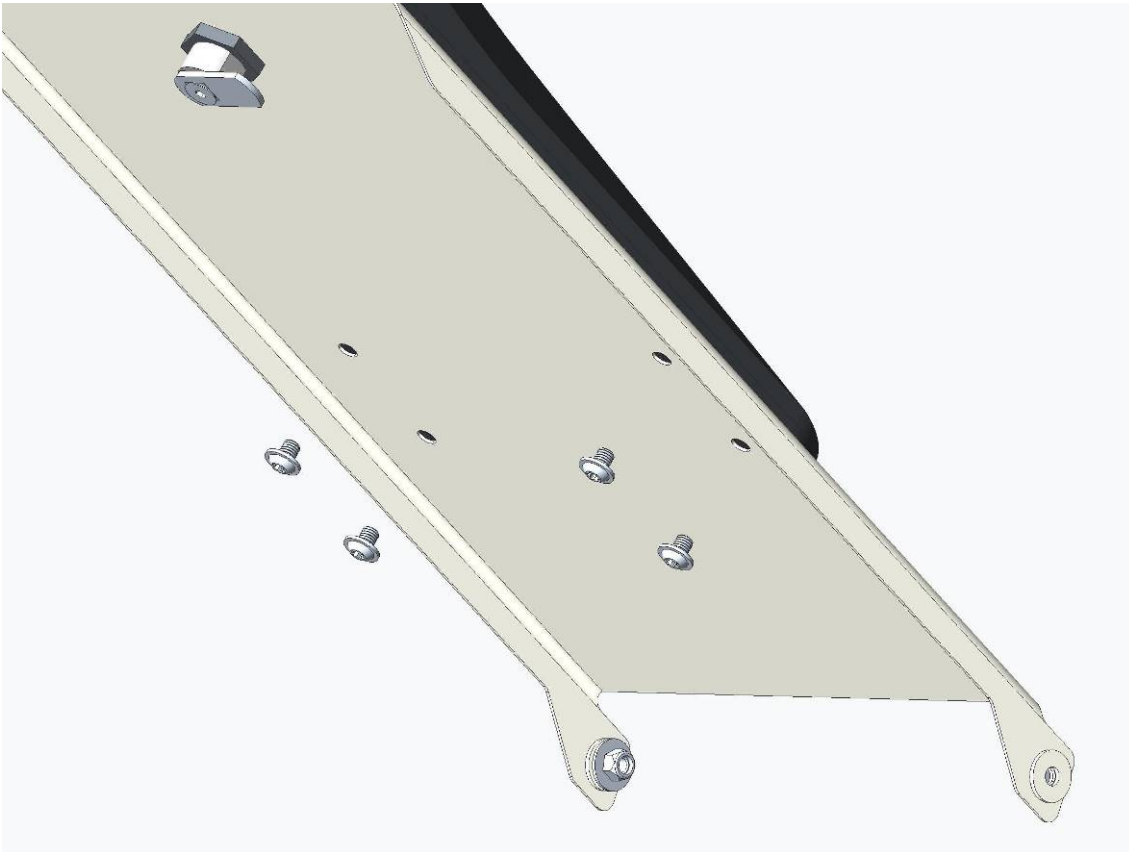


Adjust the locking bolt.



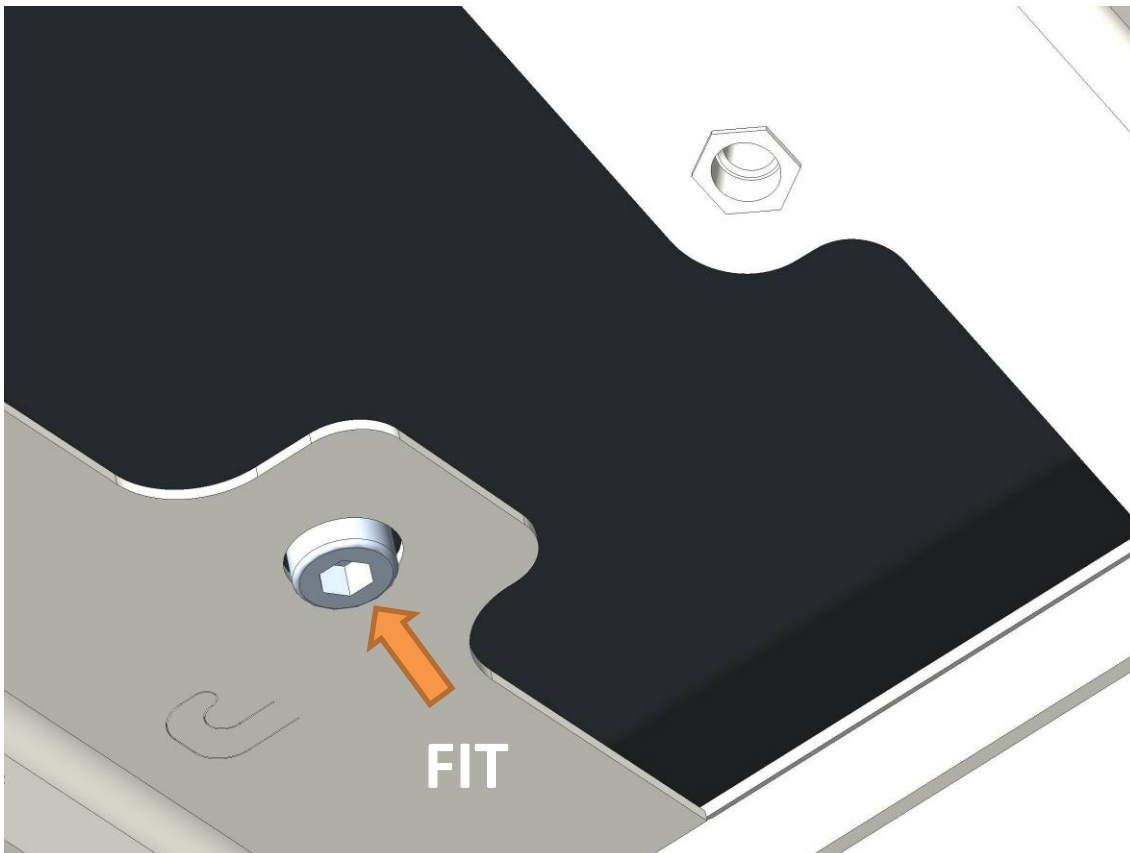


Install the seat on to the hood. Use 4 x M5x6 Torx bolts from the Frame kit – these bolts are not included in the (2) Seat set!

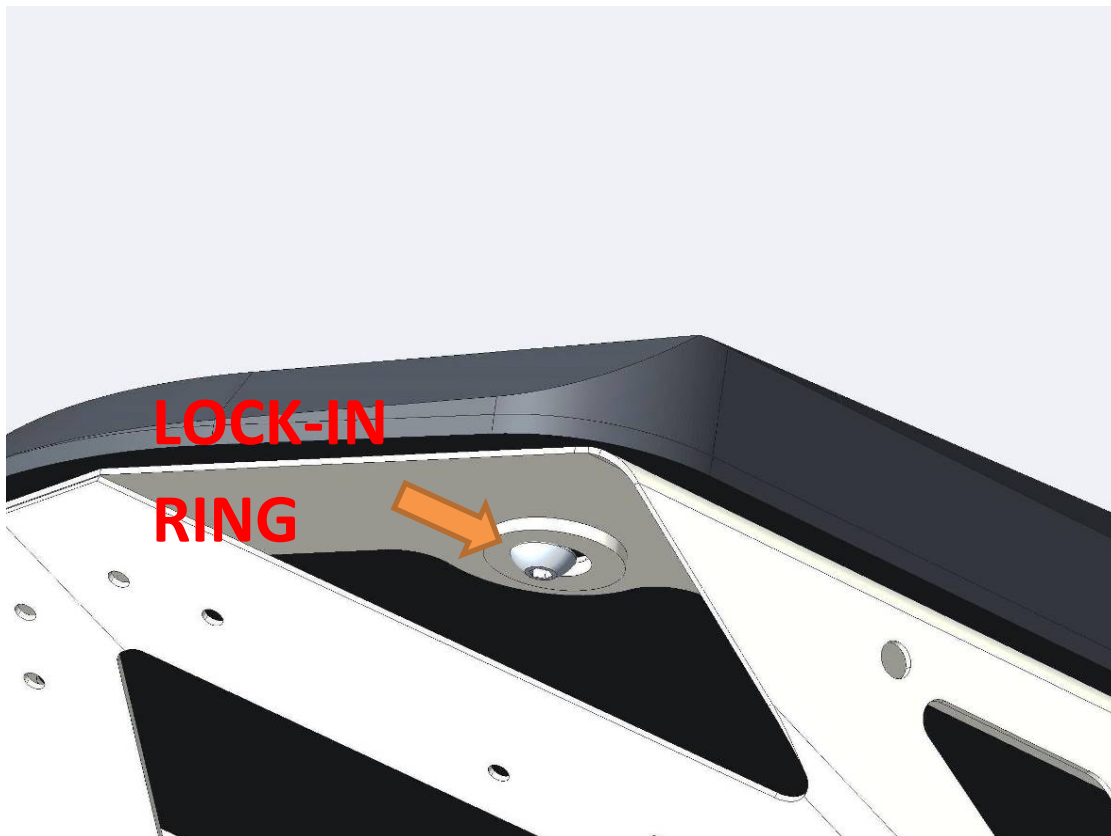


Bolt the seat on to the hood.

Adjust the seat so it fits the holes on the moto seat subframe (1):



Adjust the bolt protrusion, so they lock into the subframe holes.



Check that the seat locks in to the Stainless steel rings (do not worry if the powder-coat is scratched – it is stainless!). If necessary readjust the height of the lock-in bolt:



To lift the seat grab it with both hands in the middle and lift it upwards, so it bends and the lock-in bolts snap out of the stainless ring sockets.